

NEW BUILD

TRADE COUNTER RETAIL/
LIGHT INDUSTRIAL/WAREHOUSING

From 4,827 Sq ft - 22,184 Sq ft
On a Site of 1.47 Acres



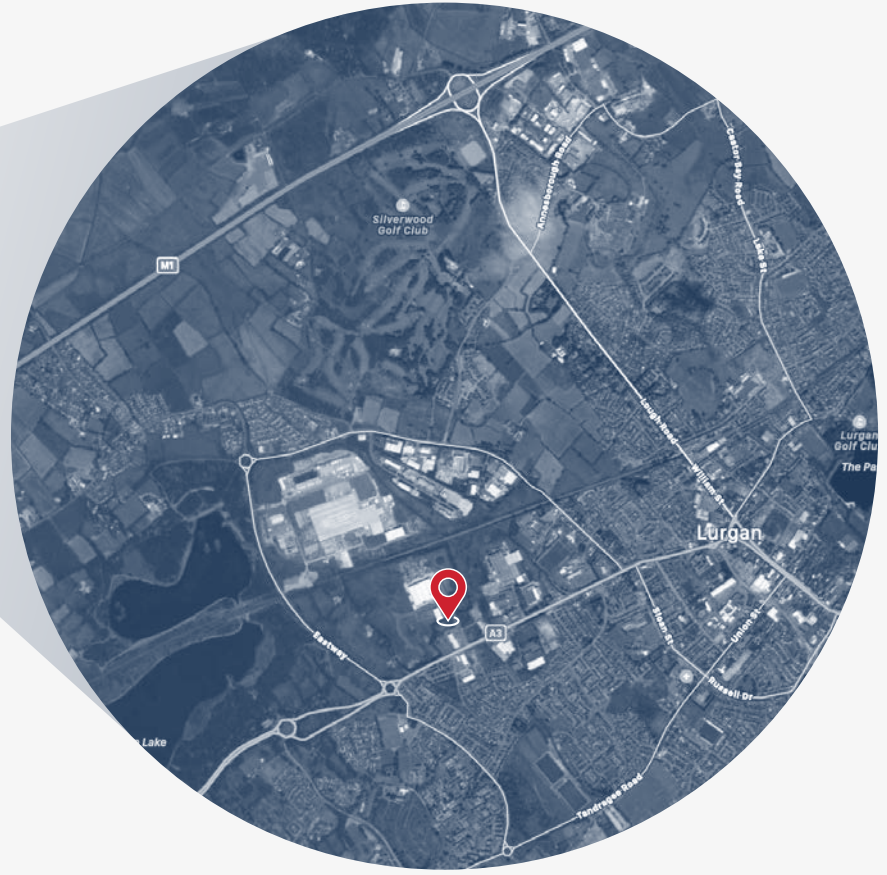
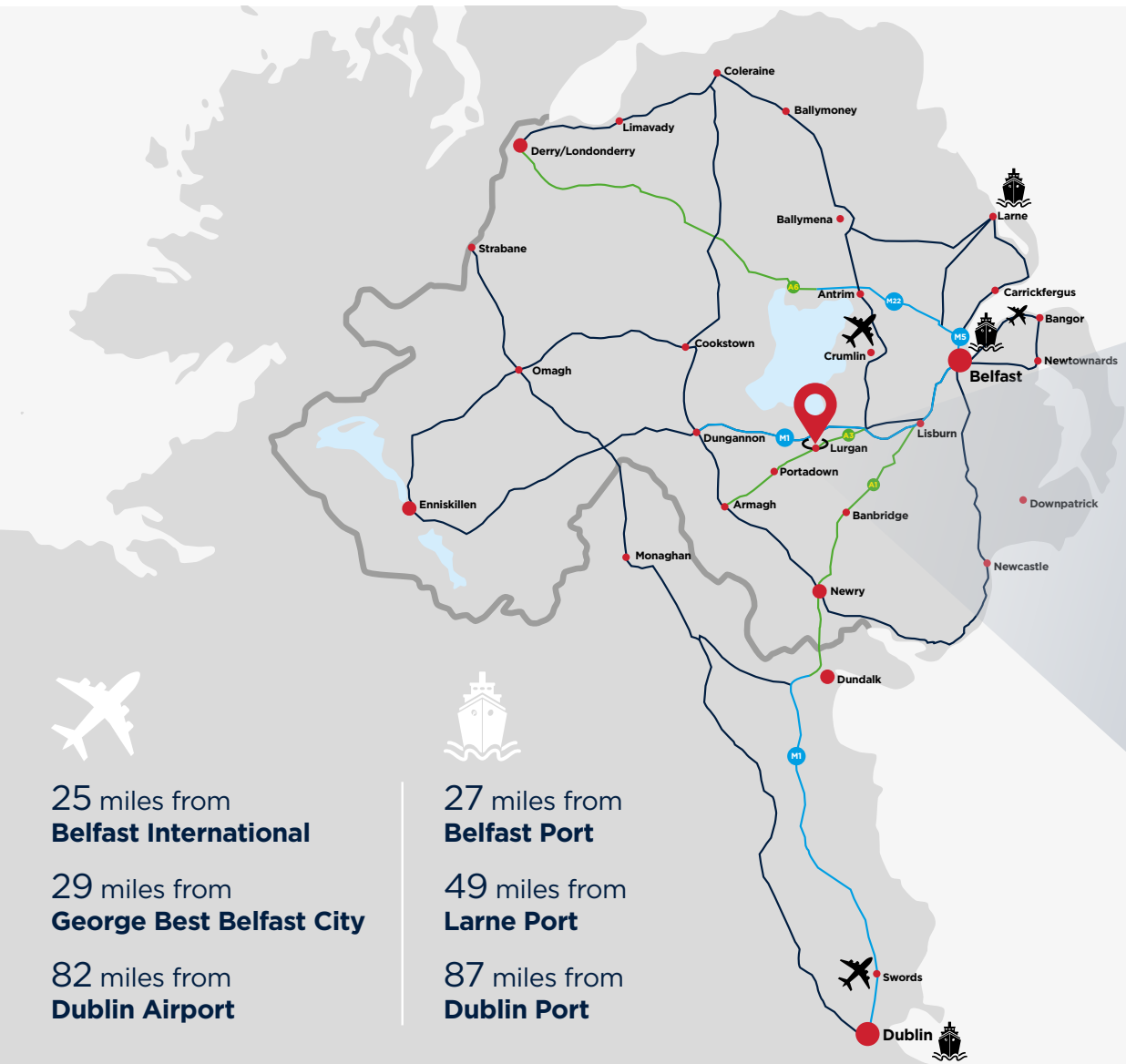
Lambert
Smith
Hampton

Lisney

Units 5, 6 and 7, Quarry Business Park,
Portadown Road, Lurgan, BT66 8QF

TO LET

QUARRY BUSINESS PARK LOCATION



QUARRY BUSINESS PARK PROPOSED SPECIFICATION

Lambert
Smith
Hampton

Lisney



80MM

KINGSPAN ARCHITECTURAL
MICRORIB AND TRAPEZOIDAL



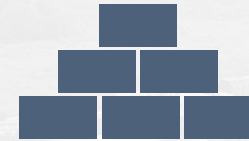
35KN / SQM

FLOOR LOADING



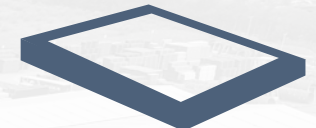
LED

LIGHTING



1.2M HIGH

BLOCKWORK



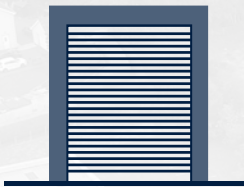
15%

ROOFLIGHTS



MIN 10M

LOADING APRON



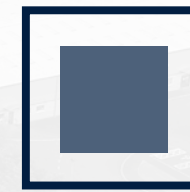
3NO. DOORS

5M ELECTRIC
ROLLER SHUTTER



ALUMINIUM

FENESTRATION



1.47 ACRES / 0.59HA

SITE AREA



2.4M

SECURITY FENCING
TO PERIMETER



SECURE ACCESS



6M

EAVES



8.5M

APEX



PARKING

28NO. TARMACADAM
SPACES



POWER

3 PHASE ELECTRIC
SUPPLY

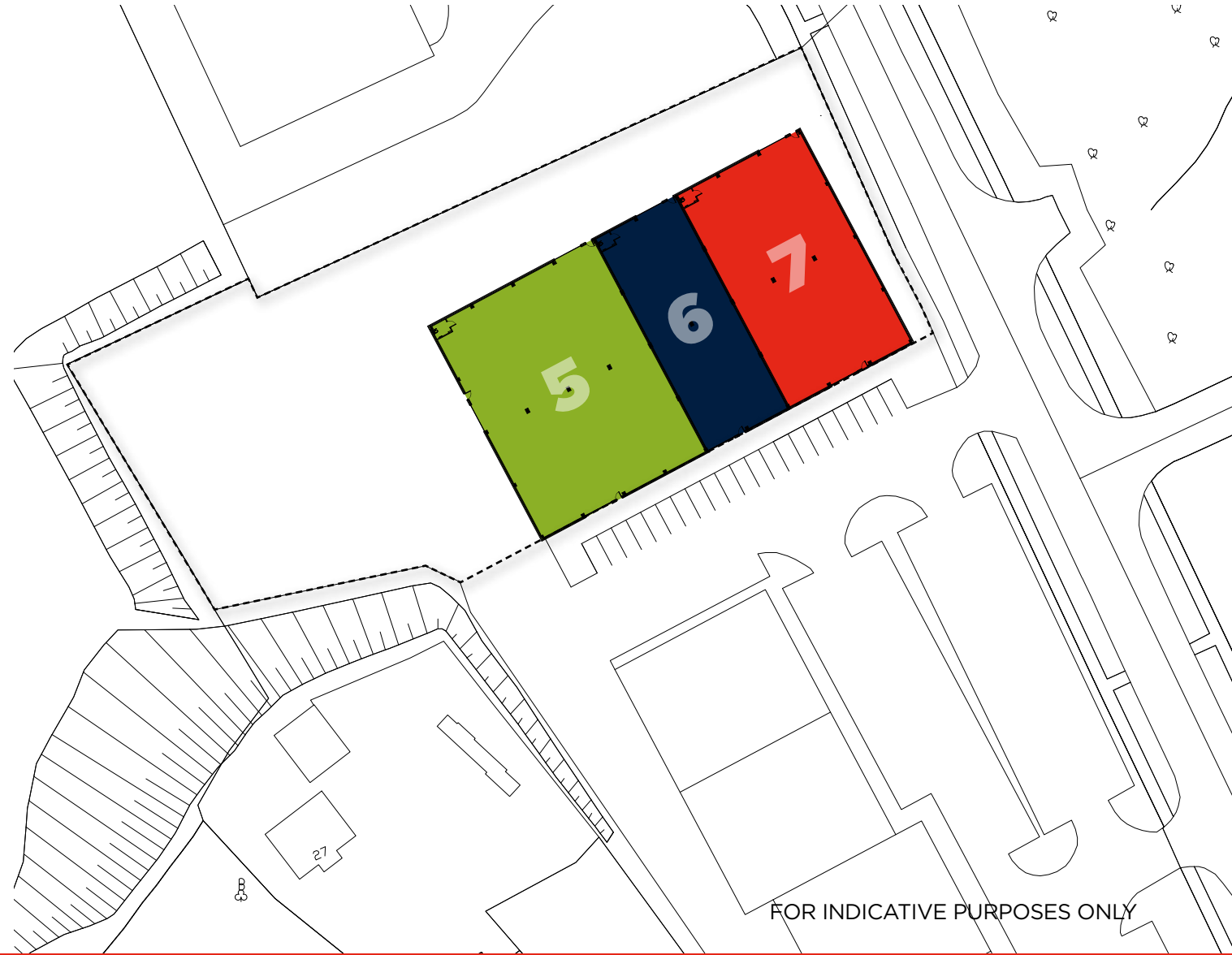


GAS

QUARRY BUSINESS PARK SCHEDULE OF ACCOMMODATION

Lambert
Smith
Hampton

Lisney



Unit 5 9,820 sq ft / 912.3 sq m plus yard of .82 acres / 3,336sq m

Unit 6 4,827 sq ft / 448.4 sq m

Unit 7 7,351 sq ft / 682.9 sq m

Total size
22,184 sq ft / 2,061 sq m

CAD plans available upon request

FOR INDICATIVE PURPOSES ONLY

QUARRY BUSINESS PARK PLANNING HISTORY

Lambert
Smith
Hampton

Lisney

Application Number	Proposal	Status
N/1998/0456	Erection of Business Park (comprising units for warehousing, light industrial use and retail warehousing)(Amended Proposal)	Granted



QUARRY BUSINESS PARK

Lambert
Smith
Hampton

Lisney



UNITS 5, 6 AND 7

LURGAN

QUARRY BUSINESS PARK

Lambert
Smith
Hampton

Lisney



UNITS 5, 6 AND 7

LURGAN

QUARRY BUSINESS PARK



UNITS 5, 6 AND 7

LURGAN

QUARRY BUSINESS PARK



UNITS 5, 6 AND 7

LURGAN

QUARRY BUSINESS PARK

INFORMATION & CONTACT

Lambert
Smith
Hampton

Lisney

Lease Details

Term	15 years.
Repair	The Tenant will be responsible for external and internal repairs.
Rent	On application.
Rent Review	5 yearly.
Service Charge	A service charge will be levied to cover the costs of the general running of the business park. This is estimated to be approximately £0.75 per sq ft.
Insurance	The Tenant will reimburse the Landlord with the cost of insuring the premises.

Rates

To be assessed upon completion.

VAT

We are advised that the subject property is VAT registered, therefore VAT will be payable in addition to the prices quoted.

Contact

Lisney

Andrew Gawley

T: 07917 007522

E: agawley@lisney.com

Montgomery House
29-33 Montgomery Street
Belfast, BT1 4NX

T: 028 9050 1501

W: www.lisney.com

Lambert
Smith
Hampton

Ian Harbinson

T: 07876 454232

E: iharbinson@lsh.ie

Clarence House
4-10 May Street
Belfast, BT1 4NJ

T: 028 9026 9257

W: www.lsh.ie

Disclaimer: Lambert Smith Hampton Group Limited and its subsidiaries and their joint agents if any ("LSH") for themselves and for the seller or landlord of the property whose agents they are give notice that: (i) These particulars are given and any statement about the property is made without responsibility on the part of LSH or the seller or landlord and do not constitute the whole or any part of an offer or contract. (ii) Any description, dimension, distance or area given or any reference made to condition, working order or availability of services or facilities, fixtures or fittings, any guarantee or warranty or statutory or any other permission, approval or reference to suitability for use or occupation, photograph, plan, drawing, aspect or financial or investment information or tenancy and title details or any other information set out in these particulars or otherwise provided shall not be relied on as statements or representations of fact or at all and any prospective buyer or tenant must satisfy themselves by inspection or otherwise as to the accuracy of all information or suitability of the property. (iii) No employee of LSH has any authority to make or give any representation or warranty arising from these particulars or otherwise or enter into any contract whatsoever in relation to the property in respect of any prospective purchase or letting including in respect of any re-sale potential or value or at all. (iv) Price or rent may be subject to VAT and any prospective buyer or tenant must satisfy themselves concerning the correct VAT position. (v) Except in respect of death or personal injury caused by the negligence of LSH or its employees or agents, LSH will not be liable, whether in negligence or otherwise howsoever, for any loss arising from the use of these particulars or any information provided in respect of the property save to the extent that any statement or information has been made or given fraudulently by LSH. (vi) In the case of new development or refurbishment prospective buyers or tenants should not rely on any artists' impressions or architects' drawings or specification or scope of works or amenities, infrastructure or services or information concerning views, character or appearance and timing concerning availability or occupation and prospective buyers or tenants must take legal advice to ensure that any expectations they may have are provided for direct with the seller or landlord and LSH shall have no liability whatsoever concerning any variation or discrepancy in connection with such matters.