

TO LET

Fourth Floor, Waterside Tower, Clarendon Dock, 31 Clarendon Road, Belfast, BT1 3BG

PROMINENT WATERFRONT OFFICE SUITE COMPRISING C. 5,081 SQ. FT. WITH 12 CAR PARKING SPACES.

Lisney

COMMERCIAL REAL ESTATE



Lisney

COMMERCIAL REAL ESTATE

FEATURES

Prominent office building fitted to Grade A specification

Prime suite of 5,081 Sq. Ft.

12 dedicated car parking spaces

Surrounding occupiers include Belfast Telegraph, CCEA, Baker McKenzie and UTV

Excellent access from the Motorway network and a range of retail, leisure and service amenities.



FANTASTIC WATERFRONT ASPECT
WITH VIEWS OF THE RIVER LAGAN
AND TITANIC BELFAST

Fourth Floor, Waterside Tower

LOCATION

Clarendon Dock has developed as one of Belfast's most prestigious business locations as a result of significant investment and rejuvenation of the Laganside Waterfront.

The location provides an attractive environment with cobbled tree lined streets, landscaping, and views over the River Lagan and Titanic Belfast.

There is an NCP multi-story car park offering 911 spaces along with the recently opened AC Hotel by Marriott, both a mere 3-minute walk from the office.

Clarendon Dock is highly accessible from the motorway networks and within walking distance of the city centre and public transport links.

Occupiers in the vicinity include, Capita, Lagan Group, Council for the Curriculum, Examinations and Assessment (CCEA), Belfast Telegraph, BSO, Baker McKenzie and UTV.





LOCATION

- | | | | | | |
|----|-----------------|-----|----------------------------|-----|---------------------|
| 1. | M2 Motorway | 6. | Lanyon Place Train Station | 11. | Ulster University |
| 2. | Belfast Docks | 7. | Waterfront | 12. | M1 Motorway |
| 3. | Titanic Belfast | 8. | AC Hotel by Marriott | 13. | Belfast City Centre |
| 4. | SSE Arena | 9. | NCP car park (911 spaces) | 14. | City Hall |
| 5. | River Lagan | 10. | Victoria Square | | |



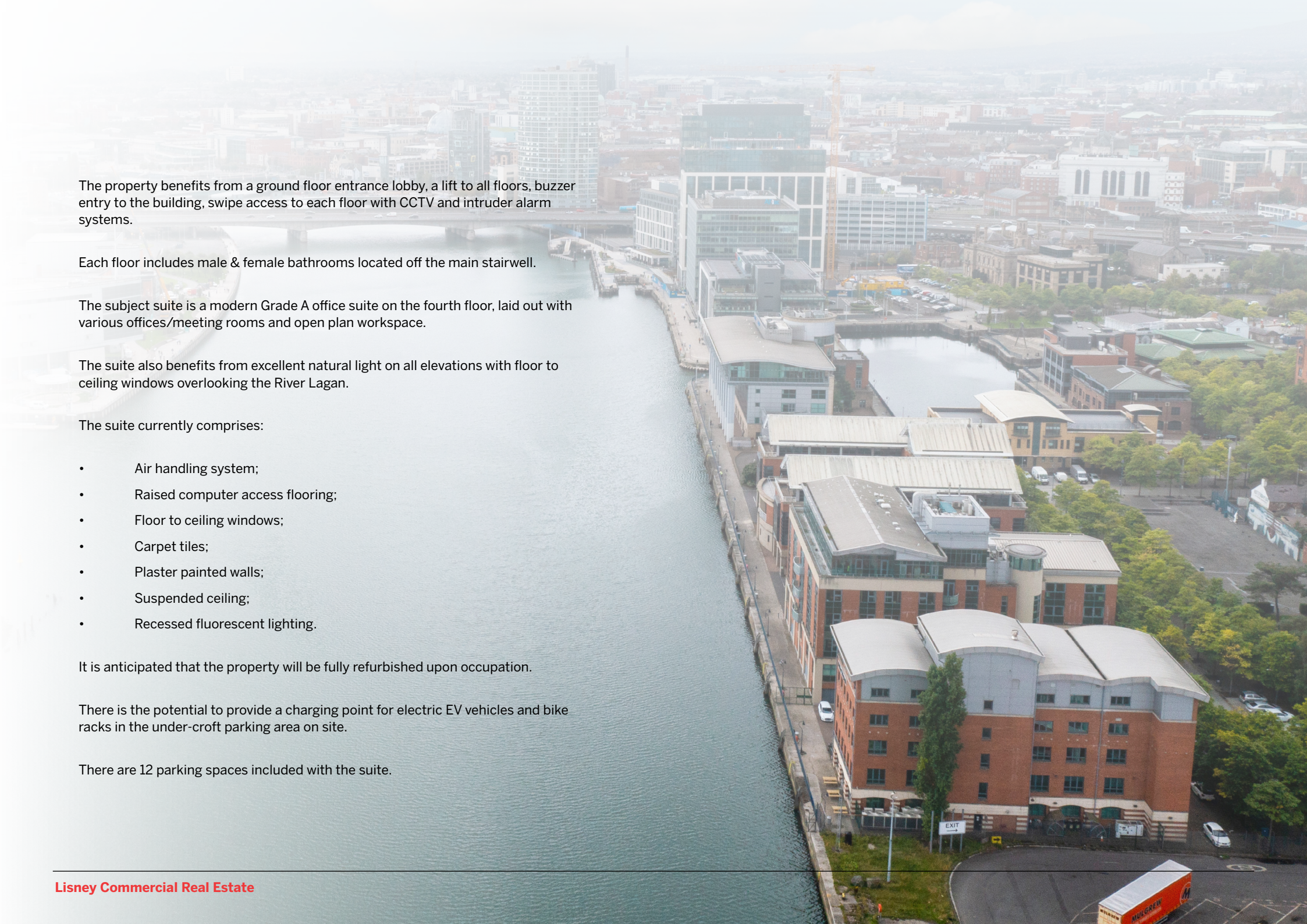
Waterside TOWER

Clarendon Dock, Belfast

DESCRIPTION

Waterside Tower comprises a prime office building with fantastic waterfront views, facing directly onto the River Lagan and over to Titanic Belfast.

The outlook afforded from all floors is unrivalled in the area.

An aerial photograph of a city waterfront. A wide river flows from the foreground towards the background. On the right bank, there are several modern, multi-story buildings with large windows and flat roofs. A bridge spans the river in the middle ground. The background shows a dense urban landscape with various buildings and a hazy sky.

The property benefits from a ground floor entrance lobby, a lift to all floors, buzzer entry to the building, swipe access to each floor with CCTV and intruder alarm systems.

Each floor includes male & female bathrooms located off the main stairwell.

The subject suite is a modern Grade A office suite on the fourth floor, laid out with various offices/meeting rooms and open plan workspace.

The suite also benefits from excellent natural light on all elevations with floor to ceiling windows overlooking the River Lagan.

The suite currently comprises:

- Air handling system;
- Raised computer access flooring;
- Floor to ceiling windows;
- Carpet tiles;
- Plaster painted walls;
- Suspended ceiling;
- Recessed fluorescent lighting.

It is anticipated that the property will be fully refurbished upon occupation.

There is the potential to provide a charging point for electric EV vehicles and bike racks in the under-croft parking area on site.

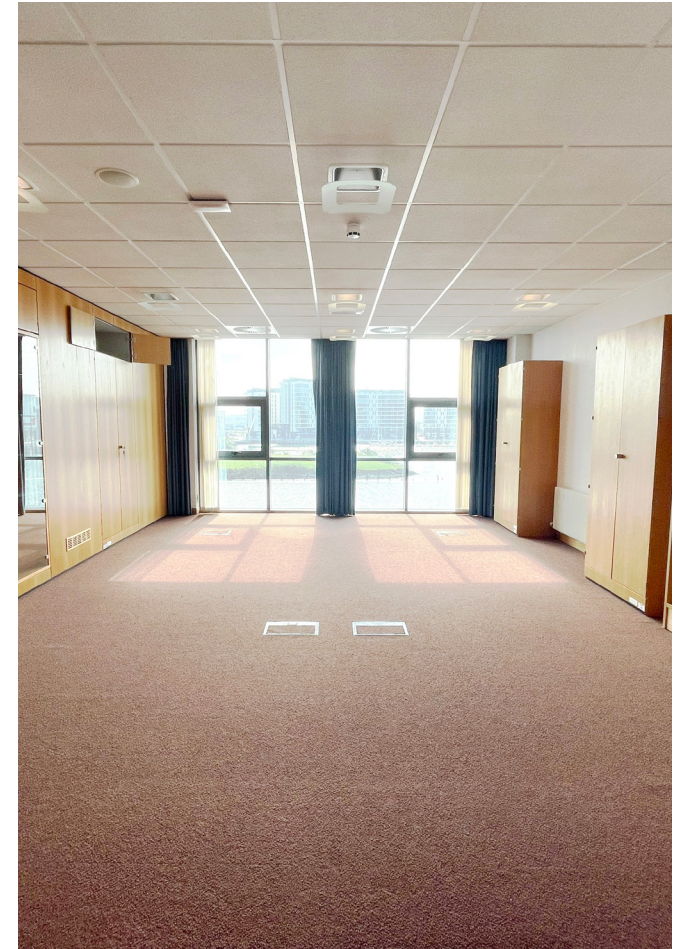
There are 12 parking spaces included with the suite.



Images for entire property. Photographs for indicative purposes only.



Images for entire property. Photographs for indicative purposes only.



Images for entire property. Photographs for indicative purposes only.

Waterside TOWER

Clarendon Dock, Belfast

ACCOMMODATION

Floor	Size Sq. Ft.	Size Sq. M.
Fourth Floor	5,081	472.0
TOTAL	5,081	472.0

SERVICE CHARGE

A service charge will be levied to cover an appropriate proportion of the cost of the internal and external common areas.

INSURANCE

The tenant is to reimburse the landlord in respect of the building insurance premium.

RATES

To be reassessed on a floor by floor basis. We understand the approximate rates payable may be in the region of;

Fourth Floor - £38,200

RENT

£10 per Sq. Ft. per annum.

RENT REVIEWS

Periodic rent reviews.

REPAIRING OBLIGATIONS

The space will be let on effective full repairing and insuring terms.

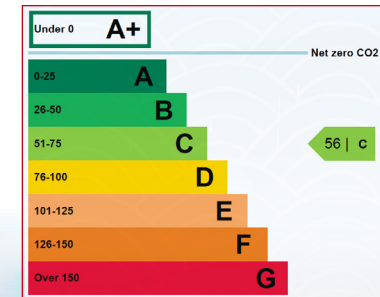
VAT

All prices, outgoings and rentals are exclusive of, but may be liable to VAT.

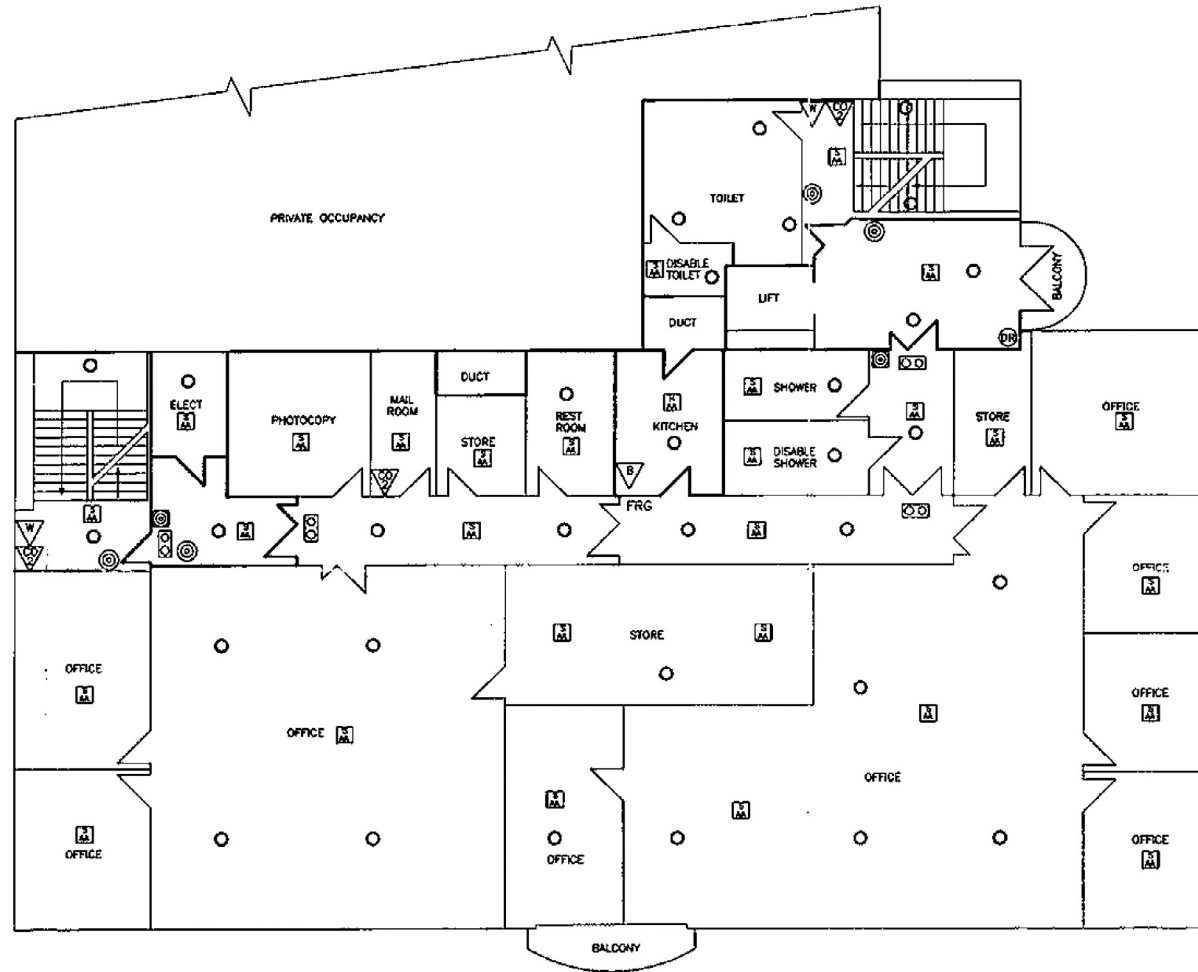
EPC

The property has an Energy Efficiency rating of C56.

The full Certificate can be made available upon request.



Fourth Floor Suite Plan





Lisney

COMMERCIAL REAL ESTATE

For further information:

Lynn Taylor: 028 9050 1556 / 07813 020 181

ltaylor@lisney-belfast.com

Viewing Strictly by appointment with the sole selling agent Lisney.

Lisney Commercial Real Estate

**3rd Floor, Montgomery House,
29-33 Montgomery St., Belfast, BT1 4NX**

Tel: 028 90 501 501

Email: property@lisney-belfast.com

lisney.com   

The Directors of Lisney for themselves and for the vendors or lessors of this property whose agents they are give notice that (i) the particulars are set out as a general outline only for the guidance of intended purchasers or lessors, and do not constitute part of, an offer or contract; (ii) all descriptions, references to condition and necessary permissions for use and occupation, and other details are given without responsibility and any intending purchasers or tenants should not rely on them as statements or representations of fact but must satisfy themselves by inspection or otherwise as to the correctness of each of them; (iii) no person in the employment of the Directors of Lisney has any authority to make or give any representation or warranty whatever in relation to the property.

