



15 Blackrock House
Blackrock Road, Cork

Lisney | Sotheby's
INTERNATIONAL REALTY



15 Blackrock House, Blackrock Road, Cork

Features

- Electronic Gate access
- Intercom system with camera
- Lift access to apartment
- First occupation 2018
- 12ft ceilings throughout
- Original period features restored
- Measuring 1500 sqft
- District heating system with Honeywell control panel
- Linehans Kitchen with high quality appliances
- Annual service charge €4390
- Beautiful gardens and communal patio area access to the rear

Nestled within the picturesque landscape of Blackrock, Co. Cork, 15 Blackrock House emerges as a beacon of luxury living, offering an unrivaled panorama of Blackrock and the beautiful green spaces it has to offer. This distinguished two-bedroom apartment stands as a testament to refined elegance, representing a pinnacle of sophistication within the esteemed Cork property market.

Boasting a south aspect orientation, the apartment affords mesmerizing vistas of the tranquil green spaces to the rear, while embracing the serene beauty of the marina to the front. It epitomizes the quality of Blackrock living, where every glance offers a glimpse into the serene allure of the surrounding landscape.

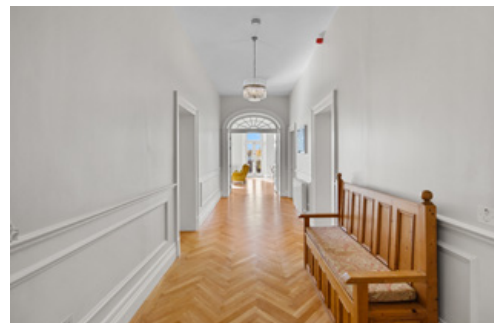
15 Blackrock House is a testament to meticulous craftsmanship and attention to detail. The building, steeped in history dating back to 1770, retains its period charm with contemporary upgrades that ensure modern comfort and convenience.

Upon entering, one is greeted by the grandeur of 12 ft ceilings, a hallmark of the apartment's spaciousness and airiness. The kitchen/living room, adorned with soaring 12 ft ceilings to the rear, serves as a captivating focal point, offering an inviting space for relaxation and entertainment against the backdrop of beautiful gardens.

The apartment comprises two generously proportioned double bedrooms, each offering a haven of tranquility and comfort. The master bedroom, distinguished by double windows, commands awe-inspiring vistas of the communal patio and relaxation areas, while the modern ensuite, featuring a double shower, epitomizes luxury living.

Security and privacy are paramount, with Blackrock House boasting an electronic gate that ensures peace of mind for residents. Additionally, the property offers the convenience of one designated car space, complemented by ample visitor parking, catering to the needs of residents and guests alike.

In essence, 15 Blackrock House represents a rare opportunity to indulge in the epitome of Blackrock living, where timeless elegance meets contemporary luxury. With its unparalleled location, refined interiors, and exquisite amenities, it stands as a testament to the finest offerings in the Cork property market, promising a lifestyle of unparalleled sophistication and serenity.







Accommodation

Hallway: 8.84m x 3.02m Beautiful bright and spacious hallway with 12ft ceilings, solid herringbone floor, all rooms leading off, period features.

Kitchen/Living Room: 6.27m x 10.02m Large open plan room with amazing dual aspect views over the gardens and green areas, 12 ft ceilings with period features. Solid herringbone wood flooring, Linehan grey kitchen with beautiful quartz worktop and island. Integrated quality appliances and great storage.

Utility: 1.22m x 3.27m Solid Wood flooring with built in storage and sink. Washer and dryer plumbed.

Bathroom: 2.41m x 3.27m Fully tiled with heated towel rail and three piece suite with power shower. Modern vanity unit. Villeroy & Boch sink. Beautiful bath and finished to a very high standard.

Master Bedroom: .78m x 3.54m Large double room with double aspect windows, incredible views over the rear gardens and 12 ft ceilings which give a feeling of luxury and space, Built in wardrobe done by Linehan's and period features throughout.

Ensuite: 3.67m x 1.60m Fully tiled with three piece suite, power shower and 12 ft ceilings and period features.

Bedroom 2: 3.92 m x 3.26m Large double bedroom with 12 ft ceiling, beautiful views overlooking the courtyard. Carpet flooring with built in wardrobe done by Linehan's.

BER Information

BER: Exempt

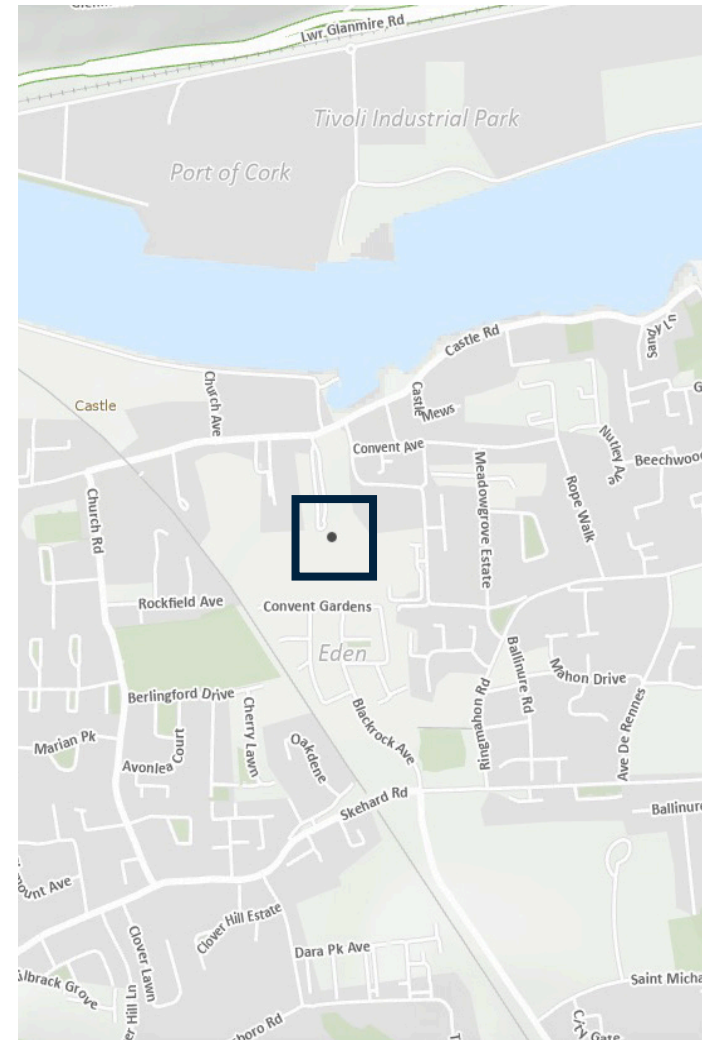
Eircode

T12 HW7C





First Floor



OFFICES

55 South Mall,
Cork, T12 RR44
T: (021) 427 8500
E: cork@lisneysir.com

51 Mount Merrion Avenue,
Blackrock, Co. Dublin,
A94 W6K7.
T: 01 280 6820

8 Railway Road, Dalkey,
Co. Dublin, A96 D3K2.
T: 01 285 1005

103 Upper Leeson Street,
Ballsbridge, Dublin 4, D04 TN84.
T: 01 662 4511

29 Dunville Avenue,
Ranelagh, Dublin 6, D06 K283.
T: 01 662 4511

St. Stephen's Green House,
Earlsfort Terrace,
Dublin 2, D02 PH42
T: 01 638 2700



lisneysir.com

Lisney Sotheby's International Realty is an Independently Owned and Operated Company.

Any intending purchaser(s) shall accept that no statement, description or measurement contained in any newspaper, brochure, magazine, advertisement, handout, website or any other document or publication, published by the vendor or by Lisney Sotheby's International Realty, as the vendor's agent, in respect of the premises shall constitute a representation inducing the purchaser(s) to enter into any contract for sale, or any warranty forming part of any such contract for sale. Any such statement, description or measurement, whether in writing or in oral form, given by the vendor, or by Lisney Sotheby's International Realty as the vendor's agent, are for illustration purposes only and are not to be taken as matters of fact and do not form part of any contract. Any intending purchaser(s) shall satisfy themselves by inspection, survey or otherwise as to the correctness of same. No omission, misstatement, misdescription, incorrect measurement or error of any description, whether given orally or in any written form by the vendor or by Lisney Sotheby's International Realty as the vendor's agent, shall give rise to any claim for compensation against the vendor or against Lisney Sotheby's International Realty, nor any right whatsoever of rescission or otherwise of the proposed contract for sale. Any intending purchaser(s) are deemed to fully satisfy themselves in relation to all such matters. These materials are issued on the strict understanding that all negotiations will be conducted through Lisney Sotheby's International Realty. Please note we have not tested any apparatus, fixtures, fittings, or services. Interested parties must undertake their own investigation into the working order of these items. All measurements are approximate and photographs provided for guidance only. PSRA No. 001848.

Copyright © Talite Eirreann - Surveying
Licence No. CYAL50423539.





© 2022 Sotheby's International Realty. All Rights Reserved. Sotheby's International Realty® is a registered trademark and used with permission. Each Sotheby's International Realty office is independently owned and operated, except those operated by Sotheby's International Realty, Inc. This material is based upon information which we consider reliable but because it has been supplied by third parties, we cannot represent that it is accurate or complete and it should not be relied upon as such. All offerings are subject to errors, omissions, changes including price or withdrawal without notice. If your property is listed with a real estate broker, please disregard. It is not our intention to solicit the offerings of other real estate brokers. We are happy to work with them and cooperate fully. Equal Housing Opportunity.

Lisney | Sotheby's
INTERNATIONAL REALTY